



 surewash

YOUR PARTNER IN HAND HYGIENE TRAINING

**SureWash
ELITE**



SYSTEM BENEFITS

SureWash is a cost-effective hand hygiene training system teaching the WHO technique.



200+

hospitals groups and universities use the SureWash platform



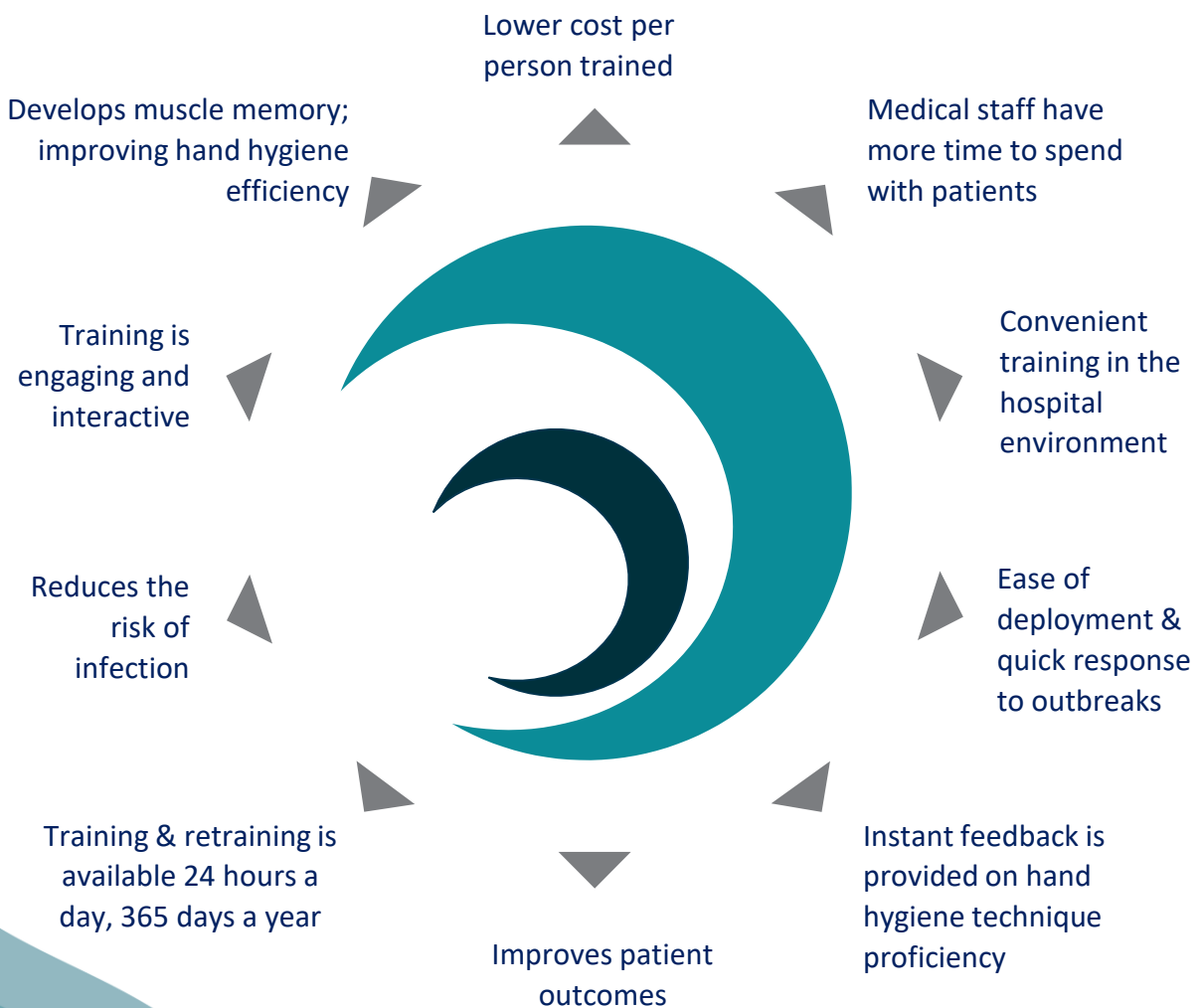
650,000+

Registered users on SureWash to date



1,000,000+

hand hygiene training sessions are delivered by SureWash annually



SUREWASH ELITE

SureWash ELITE is an advanced training kiosk that uses augmented reality to deliver competence-based training in hand hygiene and infection control.

The training system can be easily transferred within the hospital setting to offer hand hygiene training and retraining for all healthcare staff, patients and visitors. It uses a live video camera to measure the hand motions and provides real-time feedback to ensure compliance in the WHO technique. This approach helps users to develop muscle memory, therefore improving compliance, reducing the risk of infections and improving patient outcomes.

Not only is this training system beneficial to hospital staff, the SureWash ELITE also generates awareness around infection control amongst patients and family members. Its ease of use results in patients and visitors finding the training an engaging and positive experience.

Ultimately, SureWash not only saves organisations time, money and productivity, but has a very real impact in improving patient outcomes.



How effective is SureWash?



Improving long term results on hand hygiene interventions

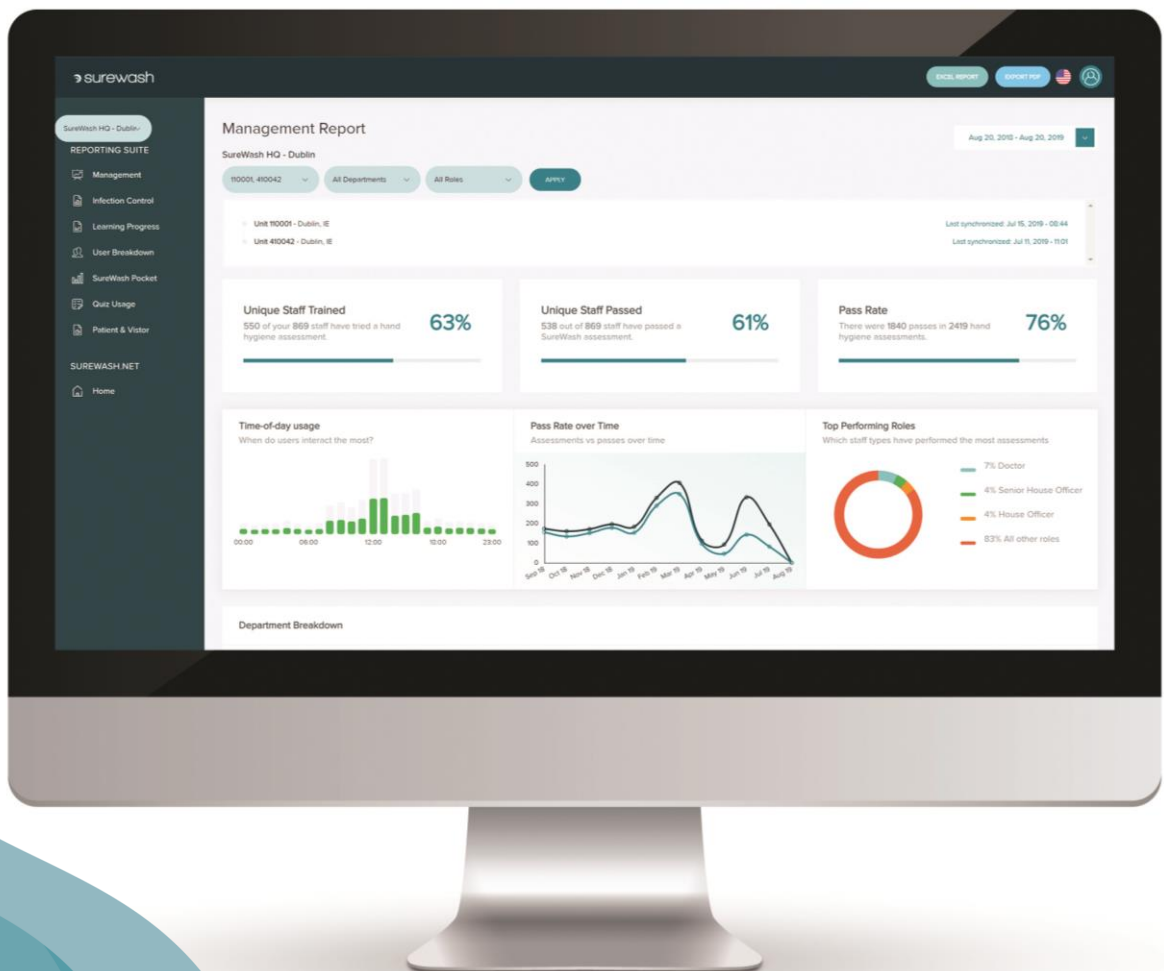
REPORTING SUITE

All data from your SureWash ELITE is stored in the cloud for administrators to access and track users learning progress on SureWash.NET.

The Reporting Suite on SureWash.NET is an audited training record for regulatory bodies. The reports allow for the automation and aggregation of data across organisations. Data can be defined by role or department and can be narrowed to a certain date. Management reports can also be downloaded and printed in PDF or Excel format.

SureWash.NET has a quiz option which provides instant feedback regarding the standard of knowledge in the organisation while also helping to address the gaps in learning. Along with this, lessons are available on PowerPoint presentation to deliver sharp bursts of learning. This content can be personalised by the organisation to encourage engagement and increased interaction among users.

All elements of the system combine to provide a complete solution for hand hygiene training.



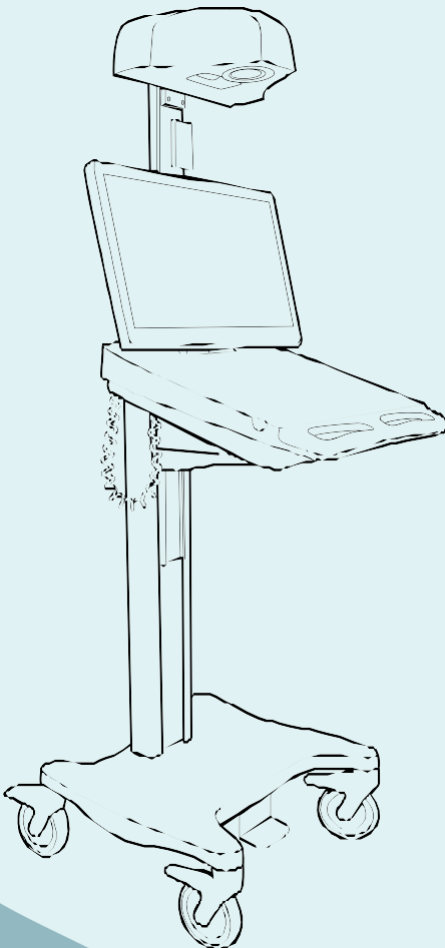
WHAT OUR USERS SAY

“Not another boring competency. SureWash uses an interactive video game system to improve hand hygiene skills. Staff love competing with each other and don’t even realize they are learning proper hand hygiene technique.”

Nancy Vallande
Miriam Hospital, Providence

“I no longer need to think about the order of the WHO 6 pose technique because it's in my memory from repeating it multiple times on the SureWash machine.”

Lenora Leonard
The Beacon Hospital, Dublin



Specifications

Height: From 40 inches /101.6 cm to 64.5 inches / 163.8 cm, height adjustment by means of a foot pedal with gas spring assisted control

Base Dimensions: 20.2 x 20.2 inches / 51.3 x 51.3 cm

Wheel dimensions: 5 inches / 12.7 cm diameter casters (4 locking) for easy transition over uneven surfaces.

Weight: 80 Kg
Volumetric weight: 135kg

Components: Dell OptiPlex 5270 All-in-One CTO.
Real Sense D435 Camera.
Iiyama 21 inch touchscreen Monitor.
3G Modem.
WiFi.
External ports: 1 x VGA, 2 x USB 2.0, 1 x RJ45.
Power 110 / 240 volt.
RFID Card reader.
(optional finger print scanner)